

PIERRE  
BLEUE  
BELGE

est. 1668

BELGIAN BLUE STONE



The "Clypot" site - Opened in 1898



The "Gauthier & Wincqz" site - Opened in 1668

SINCE 1668

# ABOUT US

## OUR COMPANY

Our company goes back a long way. To 1668, when our Belgian family story began! It is a story of five generations that have always strived for innovation, environmental protection and an exemplary work ethic.

For more than 350 years, we have been producing and marketing Belgian Blue Stone, also known as "Petit Granit". With unfailing respect for the nobility of our stone and our trade, we today operate three blue stone quarries in the Soignies region.

## OUR NATURAL STONE

Belgian Blue Stone is no ordinary material, but a geological treasure that was formed over 300 million years ago. Shaped by nature, each block of blue stone is unique, making your Belgian Blue Stone project just as unique.

Durable and timeless, Belgian Blue Stone is one of the most efficient building and decorative materials found in Europe. From cathedrals to urban landscaping, it has proven its worth in projects designed to last.

## OUR PRODUCTS

We produce and sell Belgian Blue Stone as

- Blocks and slabs
- Tiles (Standard dimensions : 20 x 20 cm, 30 x 30 cm, 40 x 40 cm, 50 x 50 cm, 60 x 30 cm)
- Cut-to-size products

These products are available in different finishes.

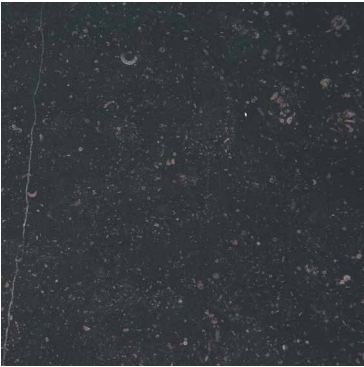
3 QUARRIES

MADE IN BELGIUM

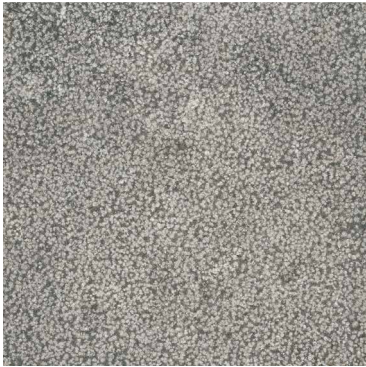


The "Tellier des Prés" site - Opened in 2006

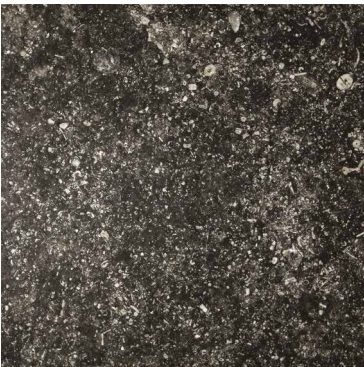
# OUR FINISHES



Black Honed



Bush Hammered



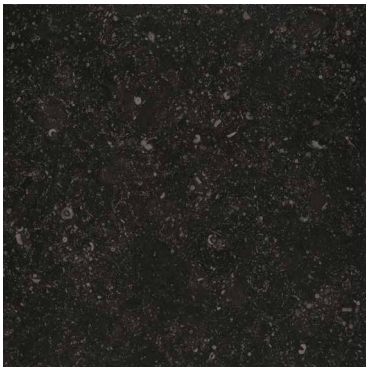
Conception  
(Brushed and Flamed)



Flamed



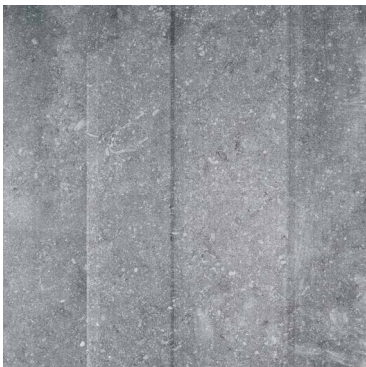
Patinato  
(Brushed)



Polished



Sabbiao Grey



Sawn

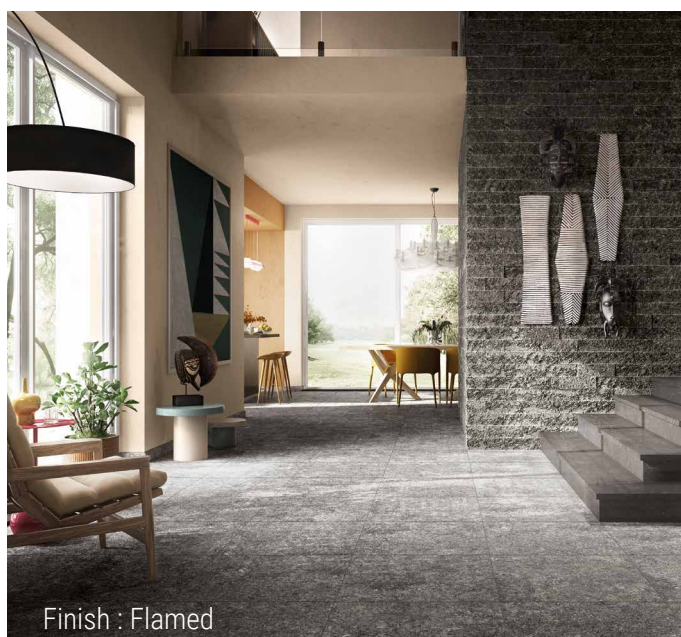


Belgian Blue Stone comes in a broad spectrum of hues and finishes, ranging from light grey to deep black through blue grey. Depending on the way it is processed, it can take on a number of different appearances to be used in all types of construction and decoration projects.

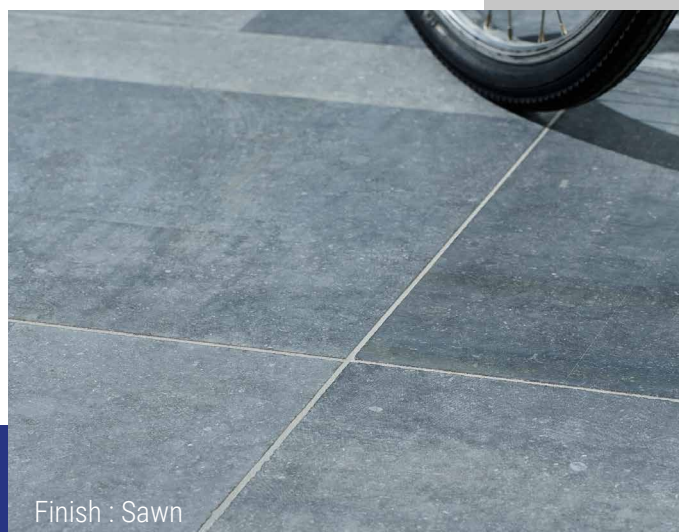
Belgian Blue Stone can be adapted to any shape, cut or size you could dream of, and depending on the finish chosen, lends itself to both indoor and outdoor applications. Our finishes are available in the form of tiles (floor or wall tiles), paving stones, strips (fine modules), borders, palisades, stairs... Give free rein to your imagination!



Get inspired  
**AND**  
design your  
next project



Finish : Flamed



Finish : Sawn

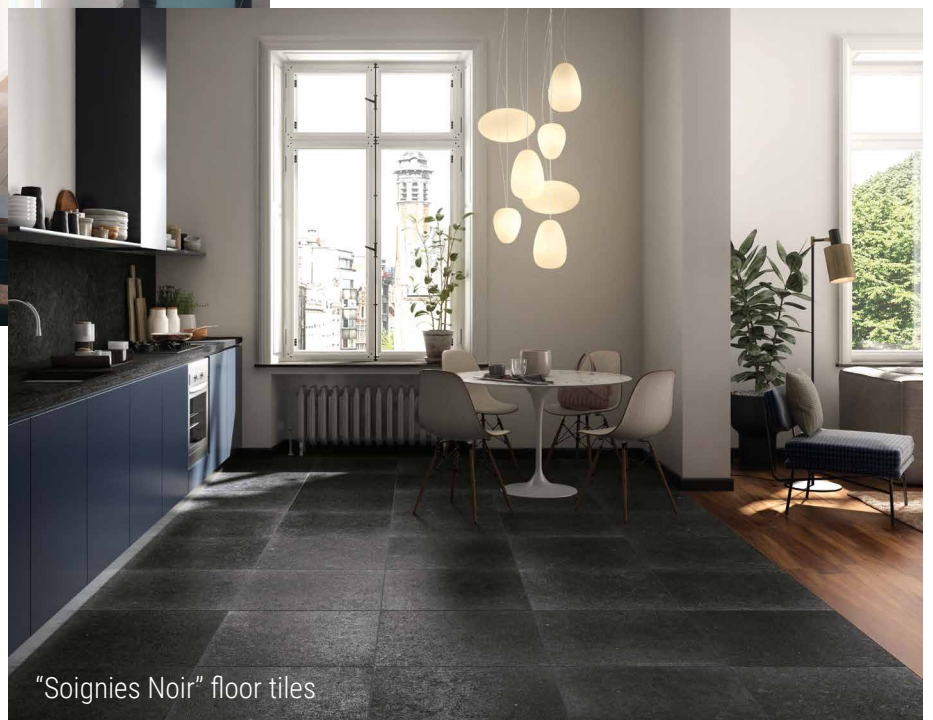
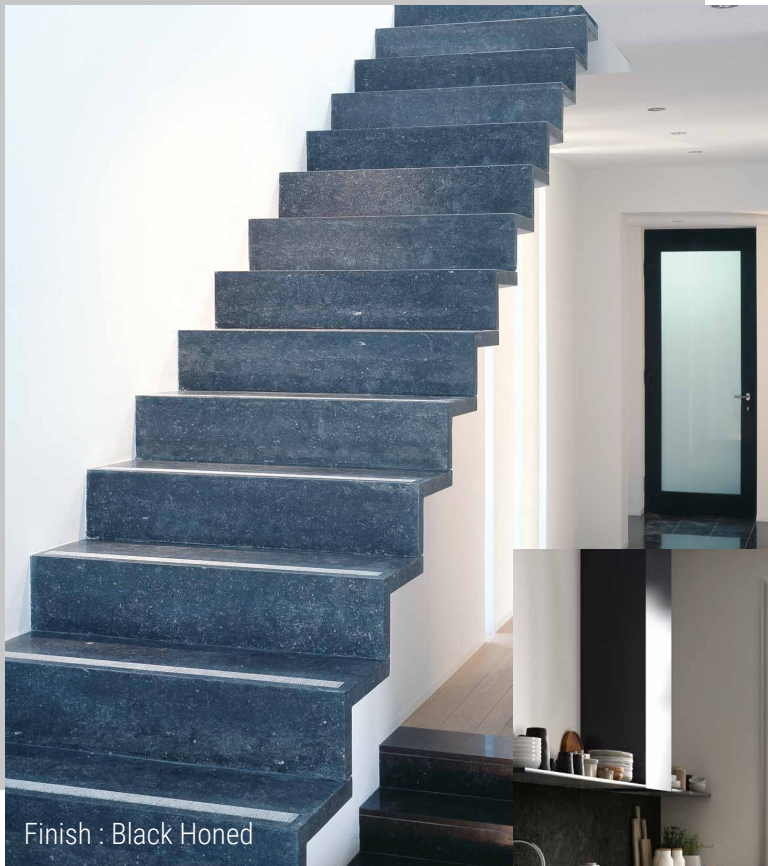


Finish : Sawn

## INTERIOR

Whether your interior is traditional or contemporary, Belgian Blue Stone will match the vibe of your renovation or construction projects. Its range of shades and ease of maintenance make it an ideal option when creating unique atmospheres that reflect your lifestyle.

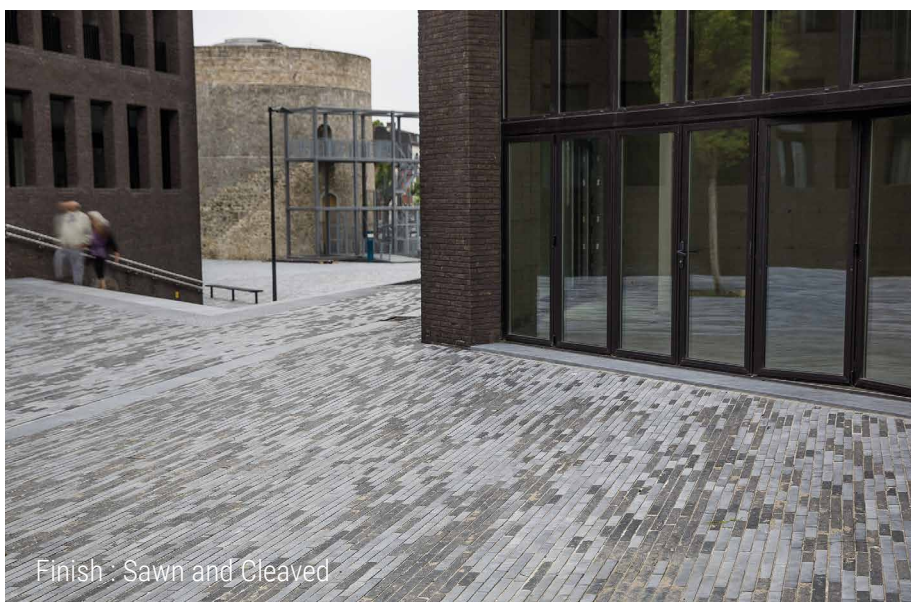
*Floor and wall tiles, kitchen worktops, staircases, mantelpieces, window sills, door thresholds, shower trays, washstands...*



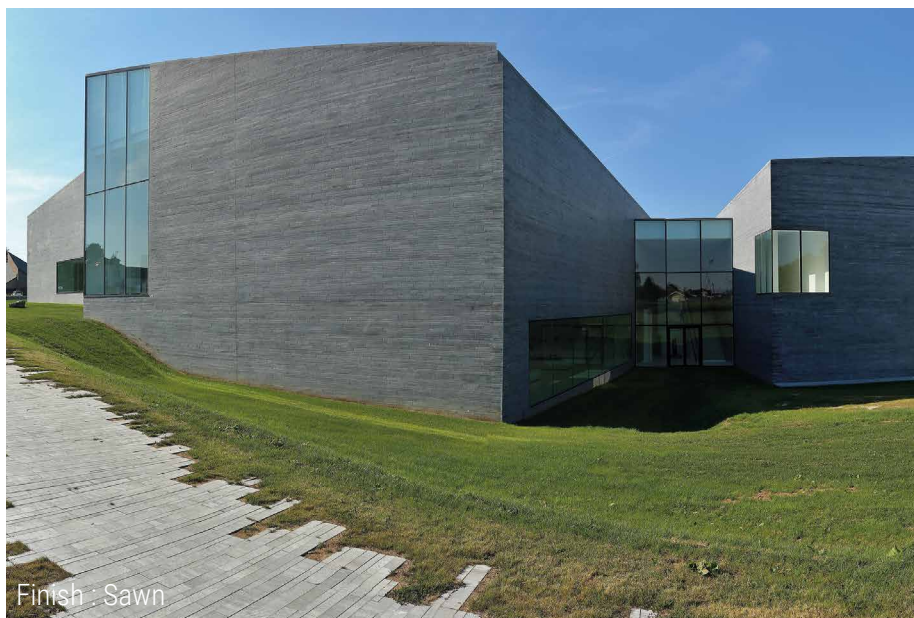
## URBAN FITTINGS

Belgian Blue Stone is timeless. Its longevity and weather resistance make it a material of choice for urban developments: roads, squares, parks and gardens...

*Pavements, stairs, curbs, gutters, tree frames, urban furniture, monuments, fountains...*



# APPLICATIONS



## FAÇADE

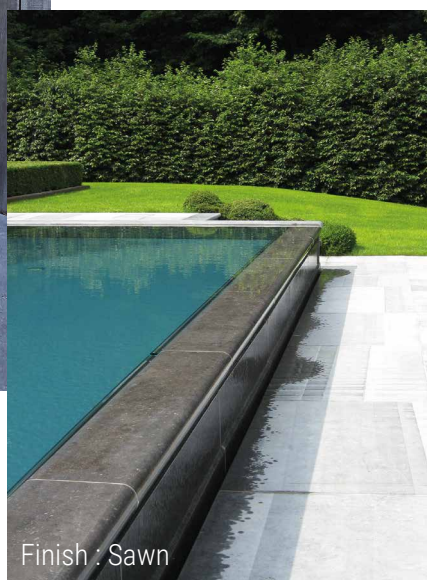
Belgian Blue Stone is a great way of finishing building facades and blends tastefully with other materials while adding a touch of character. Belgian Blue Stone is resistant to heat, rain, wind, even laden with sand and frost...

*Façade cladding, foundations, door and window sills, door and windows frames, columns, strips, pilasters...*



## GARDEN

Resistant to impact and requiring little maintenance, Belgian Blue Stone is also a suitable choice for your driveways, parking areas, garage ramps and pavements. Around the swimming pool, the alternation of smooth and non-slip surfaces will create a luxurious, comfortable and secure environment.



*Floor tiles, paving stones, borders, pool copings, stairs and steps, walls, garden furniture...*

# EXCLUSIVE PRODUCTS

## “SOIGNIES” FLOOR TILES

The stamp of a traditional floor tile...

The “Soignies Clair or Noir” floor tile is an aged finishing slab (tumbled). Its smooth surface may show traces of sawing and visual characteristics typical of natural stone (fossils, veins or traces of white calcite). The “Soignies” floor tile develops a patina over time and blends harmoniously with both classical and contemporary compositions.



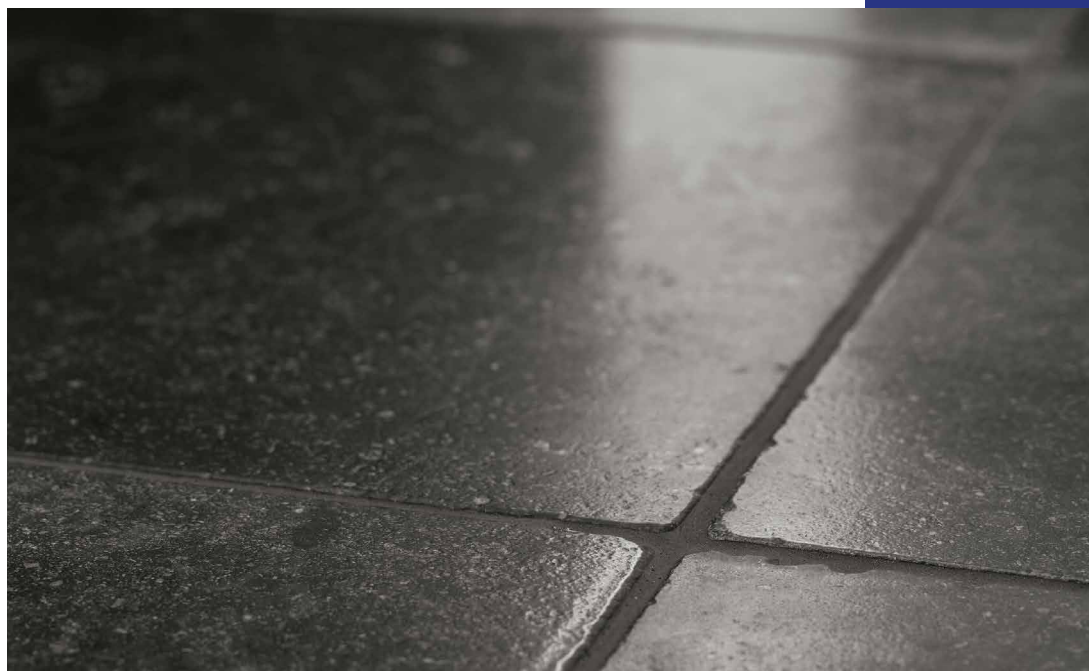
### « Soignies Clair »

A blue-grey colour



### « Soignies Noir »

A black-grey colour



## “CLIVODÉCOR” VENEER

“clivoDÉCOR” is a thin veneer of Blue Limestone that lends itself to a wide range of applications. It offers a raw, structured and sparkling face, of a dark grey colour, resulting from the cleavage, i. e. the bursting of the stone.

The particular visual characteristics inherent to natural stone: fossils, white spots, black veins or white veins can appear on the surface, which gives clivoDÉCOR an irresistible charm! clivoDÉCOR thin veneers reflect light and give your building a bright and shiny look.



# BELGIAN BLUE STONE QUALITY



## A 100% NATURAL STONE

Created by nature and without the addition of harmful products



## A DURABLE STONE

With a maximum and multiple life span



## A RESISTANT STONE

Unaffected by frost, pollution, chlorine and road salt

The "Petit Granit – Belgian Blue Limestone" is a compact limestone of sedimentary origin, resulting from the accumulation of innumerable crinoid items cemented into a mass of microcrystalline calcite. This is a packstone, sometimes grainstone (DUNHAM classification) or biomicrite (FOLK classification).

The average composition is 96 to 99 % carbonates (mainly calcite), from 0 to 1 % quartz, 0.2 to 0.5 % iron oxides and 0.2 to 0.4 % organic carbon.

The colour is grey, from blue-grey to blue-black, due to organic matter present in the calcite crystals. The stone takes on a light grey patina.



- Non-radioactive
- Incombustible
- Non-allergenic
- Low porosity
- Resistant to compression
- Resistant to wear

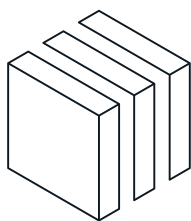


Cut from  
ATG-certified  
Belgian Blue Stone



# Technical characteristics

	REFERENCE	UNITS	AVERAGE	STANDARD DEVIATION	n	E- ou E+
Apparent bulk density	NBN EN 1936: 2007	kg/m <sup>3</sup>	2690	15	233	2668
Porosity	NBN EN 1936: 2007	% vol	0.24	0.15	244	-
Water absorption under atmospheric pressure	NBN EN 13755: 2008	% m	0.10	0.0	30	-
Compressive strength	NBN EN 1926: 2007	MPa	157	21	398	124
Bending strength under a centrally placed load	NBN EN 12372: 2007	MPa	17.0	2.5	499	13.4
Wear resistance	NBN EN 14157: 2004	mm	20.5	0.7	21	21.9
Dynamic elasticity modulus	NBN EN 14146: 2004	GPa	77.1	3.2	88	71.6
Sound speed // ⊥	NBN EN 14579: 2004	km/s	5.77 5.64	0.21 0.45	49 49	5.39 4.79
Identification gel	NBN EN 12371: 2010	cycles	Nc = 168	-	48	-
Heat expansion coefficient	NBN EN 14581: 2005	α [1/°C]	4.9 E-06	5.4 E-07	21	5.84E-06
Capillary water absorption coefficient	NBN EN 1925: 1999	Not applicable, due to the low porosity of the stone				



EXPLORE MORE AT

[www.pierrebleuebelge.be](http://www.pierrebleuebelge.be)



@pierrebleuebelge | #pierrebleuebelge

Les Carrières de la Pierre Bleue Belge SA

-

Commercial Department

Chemin des Carrières, 1 • 7063 Soignies • Belgium  
+32 (0)67 34 68 00 • [sales@pierrebleuebelge.be](mailto:sales@pierrebleuebelge.be)